

WKHM – Elderlies Health Management Online-Offline Service Integration Model

Client : WKHM

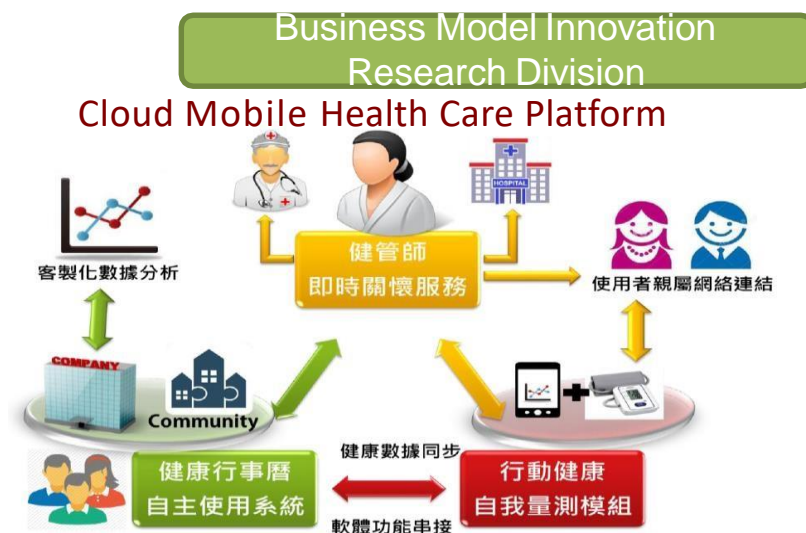
Project : IDB, MOEA Health Service Industry Promotion Program

Problem

WKHM is based on Tainan community, and uses traditional methods to conduct telephone and personnel visits. However, with the rise of telecom technology applications, competitors have rushed to carry out mobile services. The clients need to: (1) Understand the demands of elderlies ; (2) Adapt the O2O business model ; (3) Establish cross-border cooperation system (4) Expand and diversify.

Solution

1. Assists the client to develop “Health management, Lohas, and Health care” integration services online and offline.
2. Set up the “ Cloud Smart Health Service Platform”, developed integrated health management service and created household/community service model, the model is copied and to 27 communities in Tainan.



Result

1. Increase the output value: 10.62 million NTD
2. Increased Investment 6 million NTD
3. Increase employment number : 4 persons
4. Based in Taiwan and expand overseas markets such as China, Macau, Singapore and Malaysia, to establish an image of an international brand of Taiwan's Chinese medical health services.